

POLYSCREEN®



Classe 1 - NFA701
Pass - Class 1



GREENGUARD
GOLD



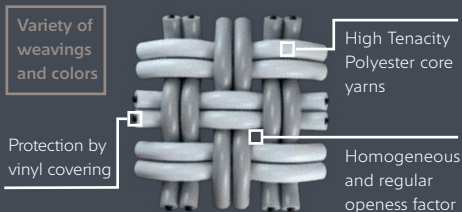
IMO

POLYSCREEN® 650



BANDALUX

BANDALUX POLYSCREEN® 650



TEJIDO CONSISTENTE CON ÓPTIMO RENDIMIENTO TÉRMICO Y VISUAL

- Excelente protección térmica gestión de hasta el 94% de energía solar ($G_{tote} = 0.06 - G_{toti} = 0.23$).
- Proporciona privacidad y bloqueo térmico: 3% de apertura homogénea.
- Rendimiento energético: contribuye al ahorro energético en calefacción y aire acondicionado.
- Filtrado de la luz muy eficaz: bloqueo del 97% de la luz ($TV=3\%$).
- Óptimo rendimiento acústico: $\alpha_w: 0,35$.
- Tejido sostenible, respetuoso con la salud y el medio ambiente, 100% reciclable.
- Calidad del aire: inoloro, no desprende COV (certificado Greenguard Gold).
- Enrolle perfecto incluso para grandes dimensiones (ancho 250-300 cm).
- Resistencia a condiciones meteorológicas extremas (IMO) y al cloro.

TISSAGE RENFORCÉ , TRES BONNE EFFICACITÉ THERMIQUE ET VISUELLE

- Protection thermique renforcée : jusqu'à 94 % de l'énergie solaire maîtrisée ($G_{tote} = 0.06 - G_{toti} = 0.23$).
- Confidentialité et barrière thermique : 3 % d'ouverture homogène.
- Performances énergétiques : contribue aux économies de chauffage et de climatisation.
- Excellent filtre lumineux : 97 % de la lumière stoppée ($TV = 3 \%$).
- Très bonne performance acoustique : $\alpha_w : 0.35$.
- Tissu éco-conçu, respectueux de la santé et de l'environnement, 100 % recyclable.
- Qualité de l'air : sans odeur, il ne dégage pas de COV (certifié Greengard Gold).
- Excellent enroulement même en grandes dimensions (largeur 250 cm).
- Résiste aux conditions météorologiques en milieu les plus extrêmes (IMO), résistance au chlore.

DURABLE FABRIC WITH OPTIMAL THERMAL AND VISUAL PERFORMANCE

- Excellent thermal protection, managing up 94% of solar heat (both indoors and outdoors: $G_{tote} = 0,06 - G_{toti} = 0,23$).
- Provides privacy and protection from the heat: 3% degree of opening, throughout the entire shade.
- Energy efficiency: contributes to energy savings in heating and air conditioning.
- Highly efficient sunlight filter: blocks 97% of the sunlight ($TV=3\%$).
- Optimal acoustic performance: $\alpha_w: 0,35$.
- A sustainable, 100% recyclable, environmentally friendly and health-friendly fabric.
- Air quality: colorless, VOC emission free (Greenguard Gold certified).
- Perfect roll, even in large sizes (250-300 cm in width).
- Resistant to extreme climate conditions (IMO) and chlorine.

TESSUTO CONSISTENTE CON RESA TERMICA E VISIVA OTTIMALE

- Eccellente protezione termica, gestione fino al 94% di energia solare ($G_{tote} = 0.06 - G_{toti} = 0.23$).
- Garantisce privacy e isolamento termico: 3% di apertura omogenea.
- Rendimento energetico: contribuisce al risparmio energetico nel riscaldamento e nell'aria condizionata.
- Filtraggio della luce molto efficace: blocco del 97% della luce ($TV=3\%$).
- Rendimento acustico ottimale: $\alpha_w: 0,35$.
- Tessuto sostenibile, rispettoso della salute e dell'ambiente, 100% riciclabile.
- Qualità dell'aria: inodore, non rilascia COV (certificato Greenguard Gold).
- Avvolgimento perfetto anche per grandi dimensioni (larghezza 250-300 cm).
- Resistenza a condizioni meteorologiche estreme (IMO) e al cloro.

PROPERTIES



MAINTENANCE



CERTIFICATES

FABRICS CERTIFICATES



COMPANY & SYSTEMS CERTIFICATES



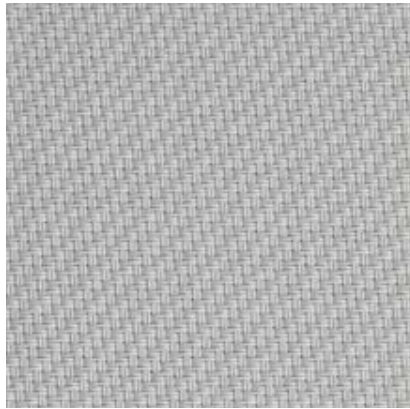
Contributing to Ecofriendly Building



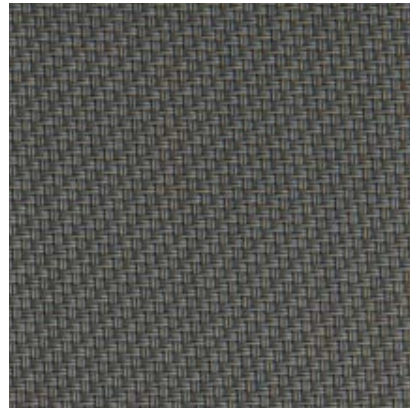
FIND MORE AT — contract.bandalux.com



White
Ref. 11002



Pearl
Ref. 11007



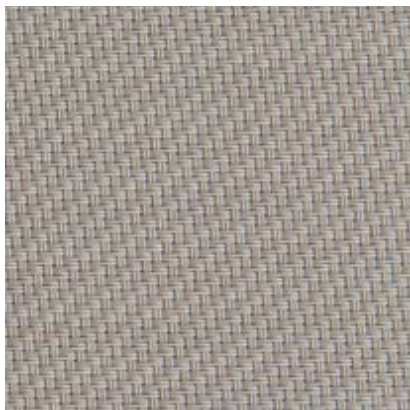
Slate
Ref. 11850



White Linen
Ref. 11220



Linen
Ref. 11020



Pebble
Ref. 11959



Ebony
Ref. 11011



OF 3%

POLYSCREEN® 650

TECHNICAL DATA

| | | |
|---|---|--|
| Composición / Composition / Composition / Composizione | - | 85% PVC + 15% PES |
| Peso / Poids / Weight / Peso | EN 12127 | 650 g/m ² - 22,93 oz/yd ² |
| Espesor / Épaisseur / Thickness / Spessore | EN ISO 5084 | 0,83 mm - 0,032" |
| Ancho de rollo / Largeur rouleau Roll width / Larghezza del tessuto | - | 250 cm - 98" |
| Grado de apertura / Coefficient d'ouverture Openess Factor / Grado di apertura (%) | - | 3% |
| Absorción acústica / Absorption acoustique Sound absorption / Assorbimento acustico | EN ISO 10534:2 | $\alpha_w=0,35$ |
| Resistencia al fuego / Classement feu Fire classification / Resistenza al fuoco | EN 13773 NFPA 701 - CAN/ULC-S109-3 UNI 9177 | Class 1 Pass Classe 1 |
| Wheelmark | IMO Res.MSC.307(88)-(2010 FTP Code) IMO MSC/Circ. 1102 | Pass |
| Resistencia al desgarro / Résistance à la déchirure Tear resistance / Resistenza alla trazione (daN) | EN ISO 13937-3 | 7,7 daN - 7 daN |
| Resistencia a la ruptura / Résistance rupture Tensile strength / Resistenza alla rottura (daN/5cm) | EN ISO 13934-1 | 154 daN - 144 daN |
| Resistencia a la luz / Résistance à la lumière Light Fastness / Resistenza alla luce (Grey Scale) | EN ISO 105 B06 (interior) EN ISO 105 B03 (exterior) EN ISO 105 B04 (exterior) EN ISO 4892-2 (exterior) | 5/5 4/5 White |
| Resistencia a la luz / Résistance à la lumière Light Fastness / Resistenza alla luce (Blue Scale) | EN ISO 105 B02 (interior) | 8/8 7/8 White |
| Test de olores / Test d'odeur / Odour test / Test degli odori | PV-3900 | 3 Pass |
| Resistencia en ambientes salinos Résistance aux environnements salins Durability in saline environment Resistenza in ambienti salini | EN ISO 112-017:92 ISO 9227:90 | Sin cambios en la superficie (max.nivel) Aucun changement en surface (niveau max.) Whitout changes in surface (max. level) Senza cambi in superficie (niveolo mass) |
| Actividad antimicrobiana / Activité antibacterienne Antimicrobial activity / Attività antimicrobica | ASTM 2180-01 | Inhibe la proliferación de bacterias Pas de prolifération de bactérie Microorganism growth inhibition Impedisce la proliferazione dei batteri |
| Material reciclado / Matériaux recyclés Recycled material / Materiali riciclati | - | 2% Pre-consumer |
| Imprimible / Imprimable Printable / Stampabile | - | Si / Oui Yes / Si |

THERMAL FACTORS

OPTICAL FACTORS

| Ref. | Colors | THERMAL FACTORS | | | | | | | | OPTICAL FACTORS | | | | | | | | | | |
|-------|-------------|------------------|-------|------------------|-------|------------------|-------|------------------------------|-------|------------------|-------|---------------------------|-------|------|------|----------|-------------|---------------------|---------------------|----------------------|
| | | % Ts | | % Rs | | % As | | EN52022-1 (Standard C and D) | | | | EN410 - EN14500 - EN14501 | | | | | | | | |
| | | G _{TOT} | CLASS | G _{TOT} | CLASS | G _{TOT} | CLASS | G _{TOT} | CLASS | G _{TOT} | CLASS | G _{TOT} | CLASS | % Tv | % Rv | % Tv,n-n | % Tv,n-diff | Glare Control Class | Night Privacy Class | Visual Contact Class |
| 11011 | Ebony | 4 | 3 | 93 | 0,56 | 0 | 0,31 | 2 | 0,11 | 3 | 0,09 | 4 | 3,5 | 3 | 3 | 0,3 | 3 | 2 | 2 | 1 |
| 11020 | Linen | 16 | 56 | 28 | 0,36 | 1 | 0,24 | 2 | 0,13 | 3 | 0,09 | 4 | 11 | 62 | 3 | 8 | 1 | 2 | 1 | 2 |
| 11007 | Pearl | 9 | 42 | 49 | 0,39 | 1 | 0,25 | 2 | 0,1 | 3 | 0,08 | 4 | 6 | 48 | 3 | 3,5 | 2 | 2 | 2 | 1 |
| 11959 | Pebble | 6 | 31 | 63 | 0,47 | 1 | 0,28 | 2 | 0,1 | 3 | 0,08 | 4 | 4 | 33 | 3 | 1 | 3 | 2 | 2 | 1 |
| 11850 | Slate | 4 | 11 | 85 | 0,48 | 1 | 0,27 | 2 | 0,1 | 3 | 0,09 | 4 | 4 | 13 | 3 | 0,4 | 3 | 2 | 2 | 1 |
| 11002 | White | 15 | 72 | 13 | 0,34 | 2 | 0,24 | 2 | 0,11 | 3 | 0,08 | 4 | 12 | 82 | 3 | 9 | 1 | 2 | 1 | 2 |
| 11220 | White Linen | 15 | 66 | 19 | 0,36 | 1 | 0,25 | 2 | 0,12 | 3 | 0,08 | 4 | 11 | 75 | 3 | 9 | 1 | 2 | 1 | 2 |

The technical data above are average values with a +/- 5% tolerance. The values quoted above represent results of standards and internal tests performed and are provided for information only to enable to make the best use of our products. To ensure warranty effectiveness, refer to warranty certificate concerned available on demand. Our products are subjects to technical evolutions, we remain entitled to modify the characteristics of our products at any time. The buyer of our products is responsible for checking the validity of the above data.